



XT-18AP

**750Mbps POE Ceiling Wireless
Access Point**



11ac Ceiling Wireless Access Points based on SNMP Protocol, it is specifically designed to operate in Residential and commercial applications. Comply with IEEE 802.11ac/n/g/b standard, it is 2.4GHz and 5GHz dual radio, with data rate up to 750Mbps (300Mbps in 2.4G, 450Mbps in 5G), enable users to enjoy more stable and faster Ethernet surfing even access into 100+ end users; Tested 101 concurrent end users.

Equipped with Qualcomm Chipset, it is 4x Wi-Fi Range than normal wireless router or wireless access points, tested in 6 hotel room Wi-Fi Range.

Build in advanced Wi-Fi channel analysis tool, adjustable RF Power, client's isolation, tag VLAN, it can apply in different environment with stable and safety performance.

Centralized managed by WLAN control, work with PoE switch, it is plug and play, Zero configuration in large quantity installation. What's more, it can access into cloud server for remote management, advertisement and captive portal authentication like Facebook Login, Google Login, Member Login and SMS Login.

Applications

This AP, dual radio and high-speed wireless access point can be deployed in a wide array of situations for both residential and commercial applications.

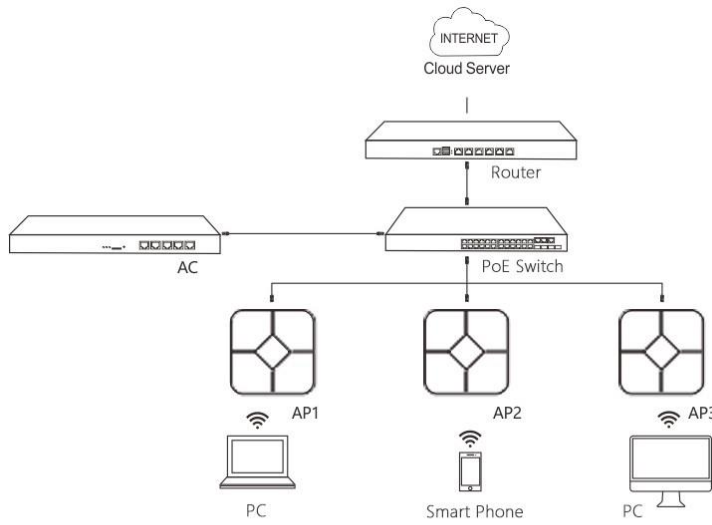
Residential Applications:

DC Power available, Adjustable RF Power based on room range; Then support Gateway operation mode, no need more wireless router; What's more, support cloud server access for remote control, to provide effective wireless connectivity.

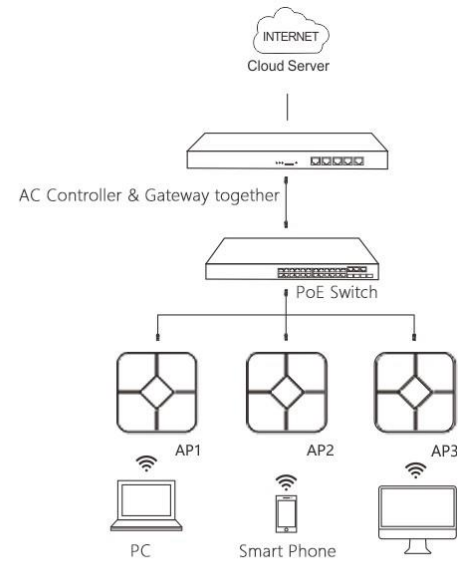


Commercial Applications:

Support PoE, RF Power with 6 hotel room Wi-Fi range, 100+ end users, work as wireless AP and managed by WLAN Controller, public applied in hotel, school, shopping mall in mass installation.



Connection Diagram 1



Connection Diagram 2

Please note: in Connection Diagram 2, it supports captive portal authentication like Google/Facebook/SMS/Member/WeChat log in.

The Guest Login page show as follow:



SPECIFICATION

Wireless:	
Standard	802.11ac/b/g/n, MIMO technology
Speed	450Mbps compatible with 5.8GHz 300Mbps b/g/n for 2.4GHz
Modulation	OFDM = BPSK, QPSK, 16-QAM, 64-QAM DSSS = DBPSK, DQPSK, CCK
Channel	Ch.1-13 for 2.4GHz Ch.36-165 for 5.8GHz
Frequency band	2.412GHz-2.472 for 2.4GHz 5.180GHz-5.825Ghz for 5.8GHz
Wireless Security	64/128-bit WEP, WPA / WPA2, WPA-PSK/ WPA2-PSK encryption
RF Power:	
RF Power	20 dbm
Hardware:	
Chipset	Qualcomm QCA9531 + QCA9887
Memory	128MB DDR2 RAM
Flash	16MB
Interface	1 * 10/100 Mbps RJ45 WAN Port
	1 * 10/100Mbps RJ45 LAN Port
	1 * Reset button, press 15 seconds to revert to default setting
Antenna	Build in 5dBi MIMO Antenna
Power consumption	PoE: IEEE 802.3af, 15W (Full Load) 24V Passive PoE, 12W DC: 12V/1.5A

Software	
Standard Version	Bandwidth: 20Mhz, 20/40Mhz, 80Mhz
Operation Mode	Gateway, Wireless AP, Repeater
SSID No	4 SSID for 2.4G, 4SSID for 5.8G
Factory Default Setting	Yes
Centralized Management by AC Controller	Yes
MAX Users	100
Firewall	DoS, SPI Firewall, IP Address Filter/MAC Address Filter/Domain Filter IP and MAC Address Binding
Protocols	IPv4
Others:	
Package Contents	750Mbps Dual Band wireless access point Ethernet Cable Quick Installation Guide Setting Accessory
System Requirements	Microsoft Windows 98SE, NT, 2000, XP, Vista™ or Windows 7, Windows 8, MAC OS, NetWare, UNIX or Linux
Environment	Operating Temperature: -20~55 °C Storage Temperature: -40~70 °C (-40 °F~158°F) Operating Humidity: 10%~90% non-condensing; Storage Humidity: 5%~90% non-condensing