



MEASUREMENT AND TEST REPORT

For
 United GULF GATE Co.
 Aladel Tower, F21, Fahad Al Salem St., State of KUWAIT

MODEL: XT-120 IP-PBX

This Report Concerns: <input checked="" type="checkbox"/> Original Report		Equipment Type: IP PBX
Test Engineer:	Acan Liang	<i>Acan Liang</i>
Reviewed By:	Robin He	<i>Robin He</i>
Report No.:	R2XM180207051-10	
Revised note:	N/A	
Issue Date:	2018-05-02	
Test Date:	2018-04-28	
Regulation:	COMMISSION REGULATION (EC) No 1275/2008 in conjunction with COMMISSION REGULATION (EU) No 801/2013	
Test Methods:	EN 50564:2011	
Conclusion:	This product complies with COMMISSION REGULATION (EC) No 1275/2008 and COMMISSION REGULATION (EU) No 801/2013.	
Prepared By:	Bay Area Compliance Laboratories Corp. (Dongguan) No.69, Pulongcun, Puxinhu Industry Area, Tangxia Dongguan, Guangdong, China	

The Test Results relate only to the sample tested.
 The test report shall not be reproduced except in full, without the written approval of Bay Area Compliance Laboratories Corp. (Dongguan)

TABLE OF CONTENTS

1 - APPLICANT AND FACTORY INFORMATION	3
2 - GENERAL PRODUCT INFORMATION	3
3 - TEST SETUP CONFIGURATION	5
4 - TEST EQUIPMENT LIST AND DETAILS	6
5 - SUMMARY OF TEST RESULT	7
6 - APPENDIX A – EUT PHOTOS.....	8

1 - Applicant and factory Information

A. 1 applicant

Company Name:

United GULF GATE Co.

Address:

Aladel Tower, F21, Fahad Al Salem St., State of KUWAIT

A. 2 factory

Company Name:

N/A

Address:

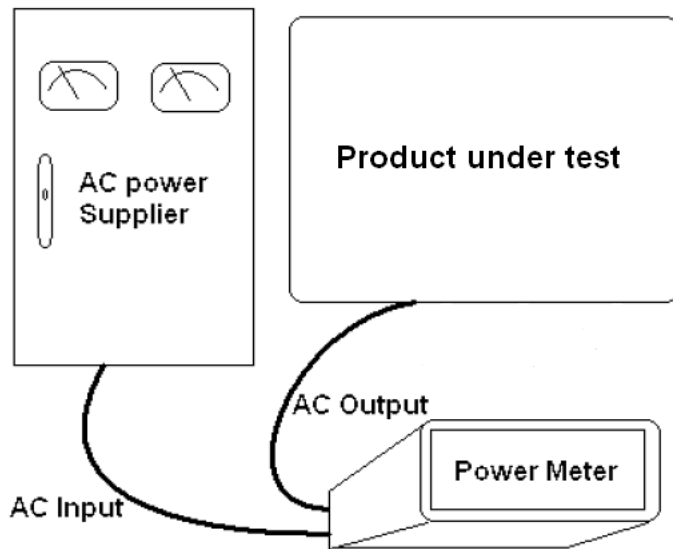
N/A

2 - General Product Information

Product Characteristics		
Items		Contents:
EUT Input Rating	Input voltage:	100-240V~
	Input current:	0.5A
	Input current:	50/60Hz
Sample No.	Sample 1	R2XM180207051-10/001
	Sample 2	N/A
	Sample 3	N/A
Brand name		XonTel
Model identification		XT-120 IP-PBX
Model difference		N/A
Version or serial number		N/A
Additional information		N/A

PSU Information and test voltage		
Power type		Internal power supply
Power supply unit	Manufacture	MEAN WELL Enterprises Co., Ltd.
	Type	EPS-25-12
	Input	100-240V~, 50/60Hz, 0.6A
	Output	12VDC, 2.1A
	Note	N/A
	Efficiency Level	N/A
Test Voltage	230Vac, 50Hz	Apply to sample(s) test.
	115Vac, 60Hz	Didn't apply to sample(s) test.
	100Vac, 50Hz	Didn't apply to sample(s) test.
	100Vac, 60Hz	Didn't apply to sample(s) test.
	220Vac, 50Hz	Didn't apply to sample(s) test.
Supply Voltage	fluctuation	$\leq 0.5\%$
	Harmonic (up to and including 13 th harmonic)	$\leq 2\%$
	crest factor	Selectable for 3 or 6 (≥ 3) for difference range.
	accuracy (V)	$\leq 1\%$
	wattmeter	$\leq 0.5\%$
Frequency response of Power Meter	resolution	0.00001W($\leq 10W$), 0.001W($10W \leq W \leq 100W$), 0.01W($> 100W$)
		100kHz
Test room	Temperature($^{\circ}C$)	24.9
	Humidity(%)	55.6
	illuminance(lx)	$> 250lx$
	Air speed(m/s)	0.03
Level of confidence at:		95%, K=2
Uncertainty:		UC $\leq 2\%$ (Power > 0.5 W) or 0.01W ($\leq 0.5W$)
Sequence of mode	Off	Yes
	Standby	N/A
	Networked standby	Yes

3 - Test set up Configuration



4 - Test Equipment List and Details

Manufacturer	Description	Model	Equipment No.	Last Cal. Date	Next Cal. Date
YOKOGAWA	Power meter	WT210	T-08-SF125	2018-3-26	2019-3-26
HP	AC power supply	HPA1103	F-08-EE024	2017-05-05	2018-05-05
--	Hygrothermograph	JR900	T-08-QA082	2017-12-19	2018-12-19
Testo	Anemometer	405-V1	T-08-EE185	2017-7-17	2018-7-17
Note: --					

Statement of Traceability: Bay Area Compliance Laboratories Corp. (Dongguan) at tests that all calibration has been performed using suitable standards traceable to the National Primary Standards and International System of Units (SI).

5 - SUMMARY OF TEST RESULT

Sample No.	Vac, Hz	Test result (Off mode)	Limit (effective date: 7 th January, 2013)
Sample 1	230Vac, 50Hz	0.001W	0.5W

Sample No.	Vac, Hz	Test result (Standby mode)	Limit (effective date: 7 th January, 2013)
--	--	--	1.0W

Sample No.	Vac, Hz	Test result (Networked Standby mode)	Limit (As of 1 January 2017)
Sample 1	230Vac, 50Hz	6.1W	8.0W

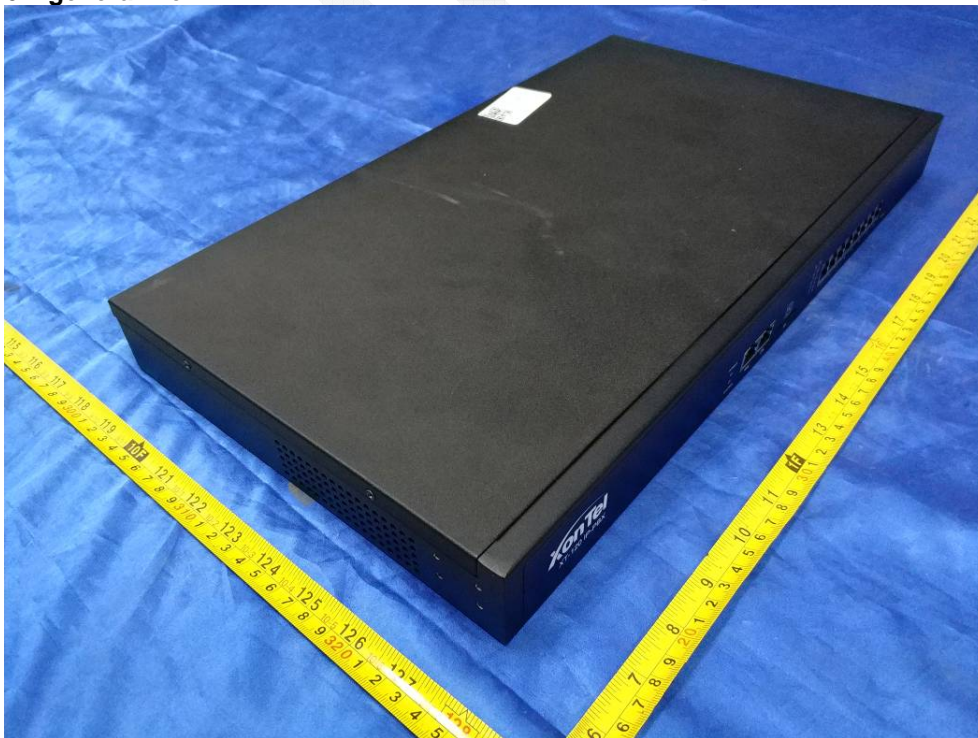
Note: Per regulation, Power consumption of equipment in any off-mode condition shall not exceed 0,50 W. The power consumption of equipment in any condition providing only information or status display, or providing only a combination of reactivation function and information or status display shall not exceed 1.00 W by effective date 7th January, 2013.

6 - Appendix A - EUT photos

6.1 Overall view



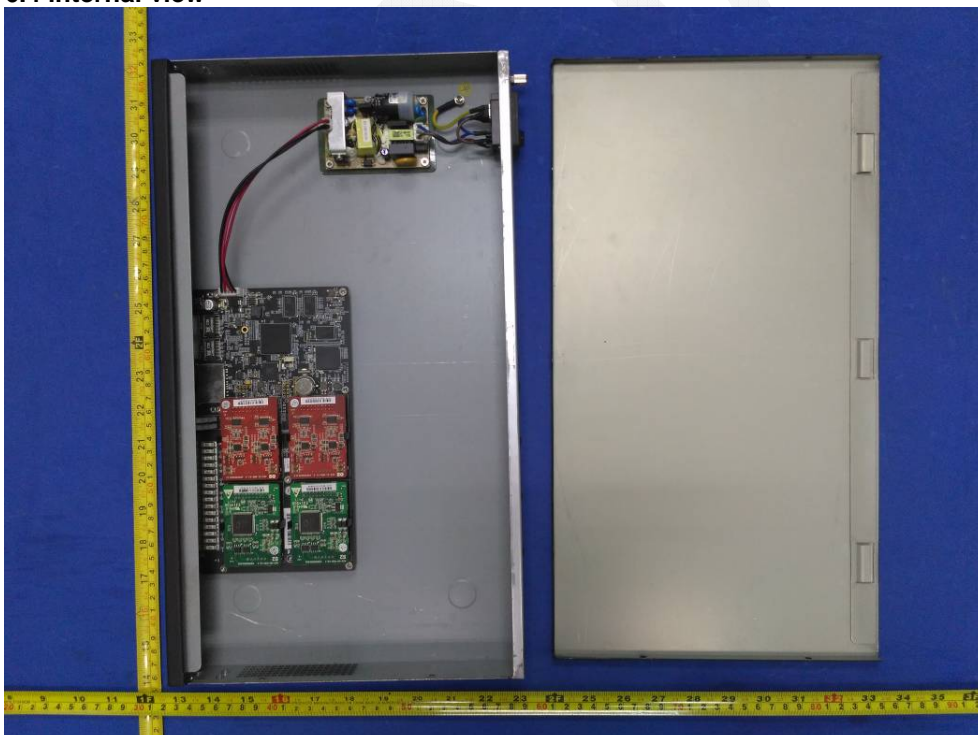
6.2 general view



6.3 general view



6.4 internal view



End of Report