



# Test Report

No. JQL180412117-3R

Date: Apr. 17, 2018

Page 1 of 10

**Applicant:** United GULF GATE Trd. Co.  
**Address:** ALadel Tower, Fahad Al-Salem St, Floor 21. - State Of Kuwait

**Manufacturer:** United GULF GATE Trd. Co.  
**Address:** ALadel Tower, Fahad Al-Salem St, Floor 21. - State Of Kuwait

The following samples were submitted and identified on behalf of the clients

**Sample Name:** XonTel  
**Model:** MS  
**Brand Name:** --  
**Sample Received Date:** Apr. 12, 2018  
**Test Period:** From Apr. 12, 2018 to Apr. 17, 2018  
**Test Requested:** In accordance with The RoHS Directive 2011/65/EU Annex II  
—Lead, Cadmium, Mercury, Hexavalent Chromium, PBBs and PBDEs Content  
**Test Method:** Please refer to next pages  
**Result Summary:**

Item	Test parameter	Conclusion
1	Lead, Cadmium, Mercury, Hexavalent Chromium, PBBs and PBDEs Content—RoHS Directive 2011/65/EU Annex II	<b>PASS</b>

**Signed for and on behalf of**  
**Shenzhen Jialian Testing Consulting Co., Ltd.**

**Lris Ma**  
**Approved Signatory**

The results shown in this Test Report refer only to the sample(s) tested unless otherwise stated. This Test Report is issued by the company subject to its General Conditions of service printed overleaf. This Test Report shall not be reproduced except in full, without written approval of the company.

**Prepared By:**  
Shenzhen Jialian Testing Consulting Co., Ltd.  
5/F, 7 Building, XinYuan Industrial Park, Xili Town, NanShan District, ShenZhen City, GuangDong Province, P.R.CHINA

This Test Report is issued by the Company subject to its General Conditions of Service printed overleaf. Attention is drawn to the limitations of liability, indemnification and jurisdictional policies defined therein. The results shown in this test report refer only to the sample(s) tested unless otherwise stated and the sample(s) are retained for 30 days only. This Test Report cannot be reproduced, except in full, without prior written permission of the Company.



## Test Report

No. JQL180412117-3R

Date: Apr. 17, 2018

Page 2 of 10

### Sample Description:

No.	Sample Name
1	Silvery shell
2	Electric Wire
3	Button Switch
4	Data Transmission Line
5	Solder Ball
6	Mixed All Parts
7	Power Plug

### Test Methods:

 with reference to IEC 62321:2013

- (1) Determination of Cadmium by ICP-OES
- (2) Determination of Lead by ICP-OES
- (3) Determination of Mercury by ICP-OES
- (4) Determination of Hexavalent Chromium by Colorimetric Method using UV-Vis
- (5) Determination of PBBs/PBDEs content by GC-MS



## Test Report

No. JQL180412117-3R

Date: Apr. 17, 2018

Page 3 of 10

### XRF Results:

No.	Sample Name	Pb (ppm)	Cd (ppm)	Hg (ppm)	Cr (ppm)	Br (ppm)
1	Silvery shell	BL	BL	BL	BL	BL
2	Electric Wire	BL	BL	BL	BL	IN
3	Button Switch	BL	BL	BL	BL	BL
4	Data Transmission Line	BL	BL	BL	BL	IN
5	Solder Ball	BL	BL	BL	BL	BL
6	Mixed All Parts	BL	BL	BL	BL	IN
7	Power Plug	BL	BL	BL	BL	IN

#### NOTE:

- ppm=mg/kg=parts per million      -BL=Below Limit      - N.A.=Not Analysis
  - IN= Inconclusive, chemical analysis necessary
- Testing results are only used for reference.

This Test Report is issued by the Company subject to its General Conditions of Service printed overleaf. Attention is drawn to the limitations of liability, indemnification and jurisdictional policies defined therein. The results shown in this test report refer only to the sample(s) tested unless otherwise stated and the sample(s) are retained for 30 days only. This Test Report cannot be reproduced, except in full, without prior written permission of the Company.



## Test Report

No. JQL180412117-3R

Date: Apr. 17, 2018

Page 4 of 10

### Chemical Test Results:

Flame Retardants	MDL	Law Limit	Result(ppm)			
			2	4	6	7
Polybrominated Biphenyls (Mono- Deca)(PBBs)	---	---	---	---	---	---
Monobromobiphenyl	5ppm	1000 ppm	N.D.	N.D.	N.D.	N.D.
Dibromobiphenyl	5ppm		N.D.	N.D.	N.D.	N.D.
Tribromobiphenyl	5ppm		N.D.	N.D.	N.D.	N.D.
Tetrabromobiphenyl	5ppm		N.D.	N.D.	N.D.	N.D.
Pentabromobiphenyl	5ppm		N.D.	N.D.	N.D.	N.D.
Hexabromobiphenyl	5ppm		N.D.	N.D.	N.D.	N.D.
Heptabromobiphenyl	5ppm		N.D.	N.D.	N.D.	N.D.
Octabromobiphenyl	5ppm		N.D.	N.D.	N.D.	N.D.
Nonabromobiphenyl	5ppm		N.D.	N.D.	N.D.	N.D.
Decabromobiphenyl	5ppm		N.D.	N.D.	N.D.	N.D.
Polybrominated Diphenylethers (Mono - Deca) (PBDEs)	---	---	---	---	---	---
Monobromobiphenyl ether	5ppm	1000 ppm	N.D.	N.D.	N.D.	N.D.
Dibromobiphenyl ether	5ppm		N.D.	N.D.	N.D.	N.D.
Tribromobiphenyl ether	5ppm		N.D.	N.D.	N.D.	N.D.
Tetrabromobiphenyl ether	5ppm		N.D.	N.D.	N.D.	N.D.
Pentabromobiphenyl ether	5ppm		N.D.	N.D.	N.D.	N.D.
Hexabromobiphenyl ether	5ppm		N.D.	N.D.	N.D.	N.D.
Heptabromobiphenyl ether	5ppm		N.D.	N.D.	N.D.	N.D.
Octabromobiphenyl ether	5ppm		N.D.	N.D.	N.D.	N.D.
Nonabromobiphenyl ether	5ppm		N.D.	N.D.	N.D.	N.D.
Decabromobiphenyl ether	5ppm		N.D.	N.D.	N.D.	N.D.

This Test Report is issued by the Company subject to its General Conditions of Service printed overleaf. Attention is drawn to the limitations of liability, indemnification and jurisdictional policies defined therein. The results shown in this test report refer only to the sample(s) tested unless otherwise stated and the sample(s) are retained for 30 days only. This Test Report cannot be reproduced, except in full, without prior written permission of the Company.



# Test Report

No. JQL180412117-3R

Date: Apr. 17, 2018

Page 5 of 10

**Note:**

1. ppm=mg/kg
2. N.D.=Not Detected (Not detected is reported when the reading is less than detection limit value.)
3. Negative=absence of Cr(VI) in the metallic sample  
Positive= presence of Cr(VI) in the metallic sample  
(The tested sample should further verify by boiling-water-extraction method if the spot test result cannot be confirmed)  
Boiling-water-ectraction:  
Negative=absence of Cr(VI) in the metallic sample  
Positive=presence of Cr(VI) in the metallic sample  
Boiling-water-extraction solution is equal or greater that 0.02mg/kg with 50cm<sup>2</sup> sample surface area.
4. #=Positive indicates the presence of Cr(VI) on the tested areas and result the regarded as not comply with RoHS requirement.  
Negative indicates the presence of Cr(VI) on the tested areas and result the regarded as comply with RoHS requirement
5. MDL=Method Detection Limit

**Remark:**

- (1) (a) It is the result on total Br while test item on restricted substances is PBBs/PBDEs. It is the result on total Cr while test item on restricted substances is Cr<sup>6+</sup>.  
(b) Results are obtained by EDXRF for primary screening, and further chemical testing by ICP(for Cd, Pb, Hg), UV-VIS(for CrVI) and GCMSD (for PBBs, PBDEs) is recommended to be performed. If the concentration exceeds the below warning value according to IEC 62321 Ed.1 111/95/2<sup>nd</sup> CDV (unit: mg/kg)

Element	Polymer	Metal	Composite Materials
Cd	$BL \leq (70-3\sigma) < X < (130+3\sigma) \leq OL$	$BL \leq (70-3\sigma) < X < (130+3\sigma) \leq OL$	$LOD < X < (150+3\sigma) \leq OL$
Pb	$BL \leq (700-3\sigma) < X < (1300+3\sigma) \leq OL$	$BL \leq (700-3\sigma) < X < (1300+3\sigma) \leq OL$	$BL \leq (500-3\sigma) < X < (1500+3\sigma) \leq OL$
Hg	$BL \leq (700-3\sigma) < X < (1300+3\sigma) \leq OL$	$BL \leq (700-3\sigma) < X < (1300+3\sigma) \leq OL$	$BL \leq (500-3\sigma) < X < (1500+3\sigma) \leq OL$
Br	$BL \leq (300-3\sigma) < X$	---	$BL \leq (250-3\sigma) < X$
Cr	$BL \leq (700-3\sigma) < X$	$BL \leq (700-3\sigma) < X$	$BL \leq (500-3\sigma) < X$

(c) OL=Over Limit, BL=Below Limit. LOD=limit of Detection, ---=not conducted.

(d) The XRF screening test for RoHS elements- The reading may be different to the actual content in the sample be of non-uniformity composition.

- (2) (a)mg/kg=ppm=0.0001%, N.D.=not detected(<MDL),  
(b)Unit and Method Detection Limit(MDL) in wet chemical test.

This Test Report is issued by the Company subject to its General Conditions of Service printed overleaf. Attention is drawn to the limitations of liability, indemnification and jurisdictional policies defined therein. The results shown in this test report refer only to the sample(s) tested unless otherwise stated and the sample(s) are retained for 30 days only. This Test Report cannot be reproduced, except in full, without prior written permission of the Company.



## Test Report

No. JQL180412117-3R

Date: Apr. 17, 2018

Page 6 of 10

Test Items	Pb	Cd	Hg
Units	Mg/kg	Mg/kg	Mg/kg
MDL	2	2	2

The MDL for single compound of PBBs & PBDEs is 5mg/kg and MDL of Cr<sup>6+</sup> for polymer & composite sample is 2mg/kg.

(c) According to IEC 62321 Ed.1 111/95/2<sup>nd</sup> CDV, result on Cr<sup>6+</sup> for metal sample is shown as Positive/Negative.

Negative=Absence of Cr<sup>6+</sup> coating, Positive= Persence of Cr<sup>6+</sup> coating.



**Appendix 1:**

**Photo of Submitted Sample**

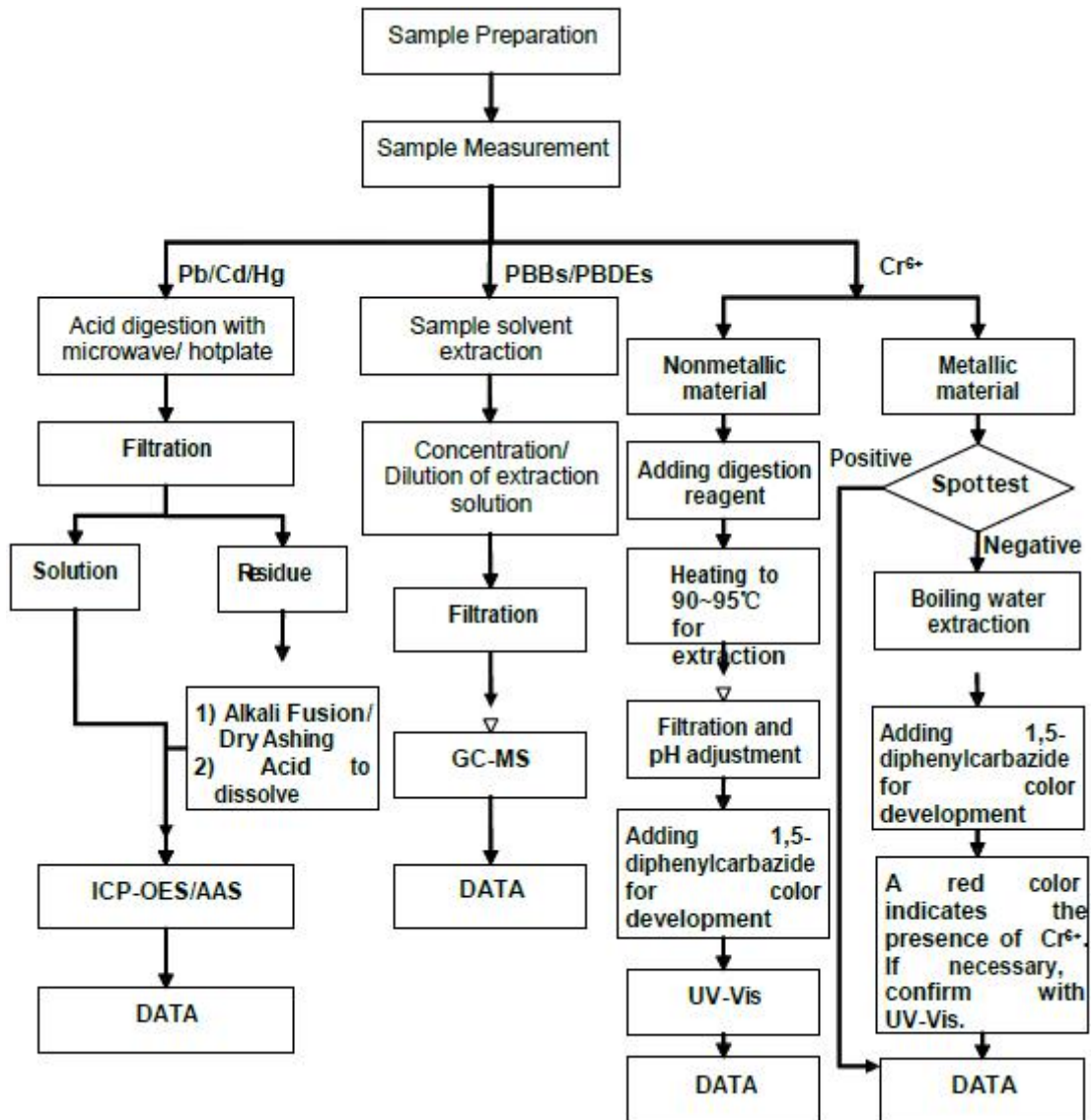




Appendix 2:

**RoHS Testing Flow Chart**

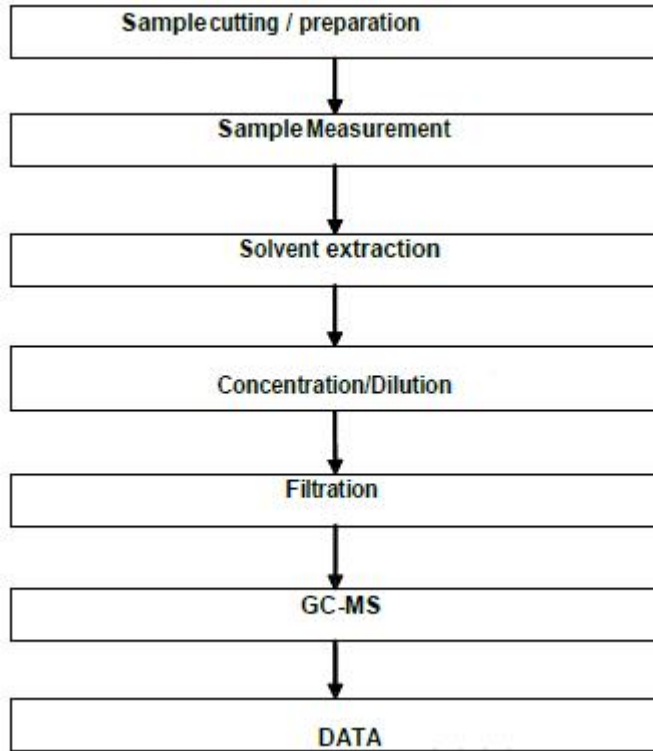
These samples were dissolved totally by pre-conditioning method according to below flow chart (Cr6+ and PBBs/PBDEs test method excluded).





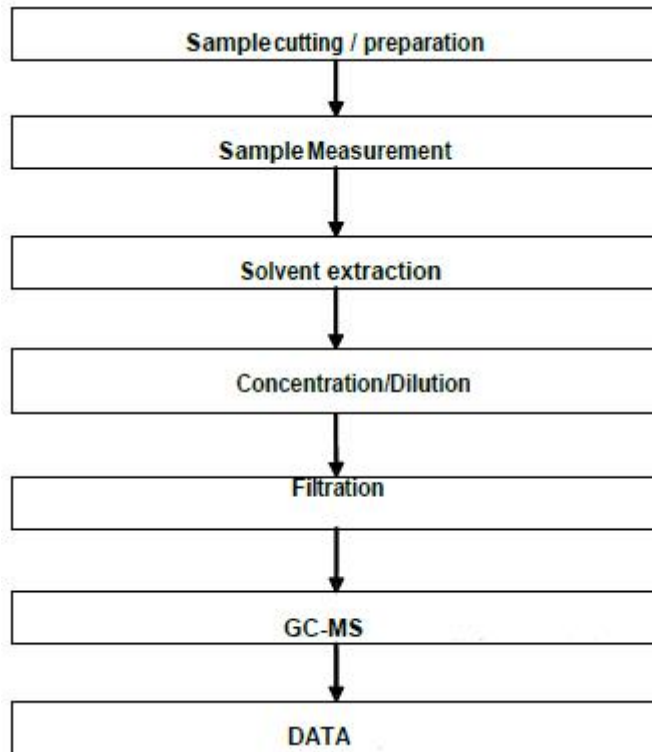


**HBCDD Testing Flow Chart**





**Phthalates Testing Flow Chart**



**\*\*\* End of Report \*\*\***